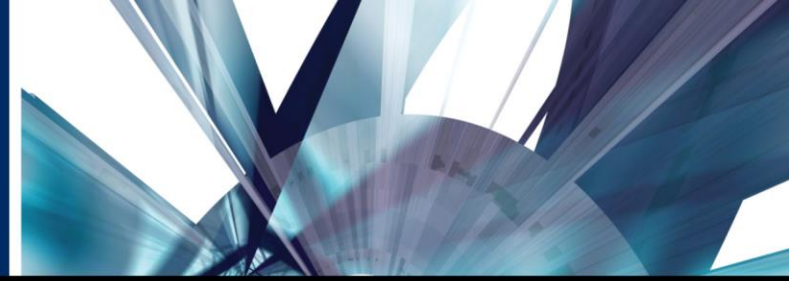


PEOPLE | PROPERTY | REPUTATION

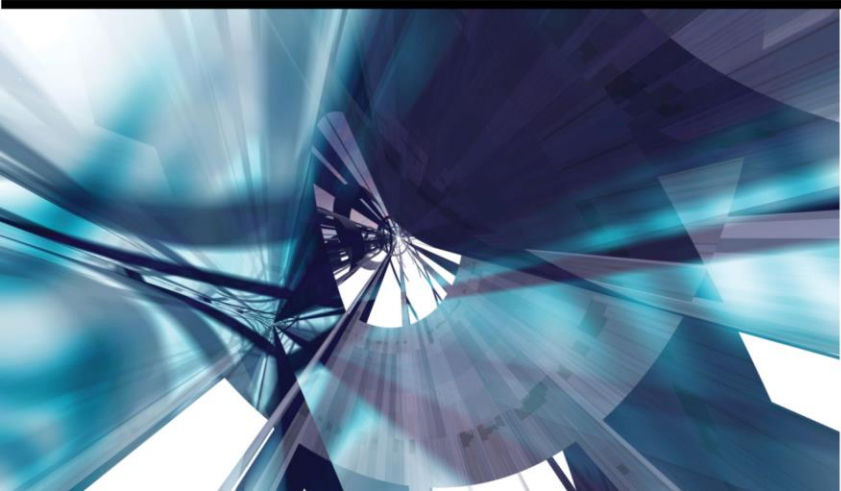
ASSET PROTECTION



THE VOICE OF FOOD RETAIL 



Injury Elimination Through Innovation



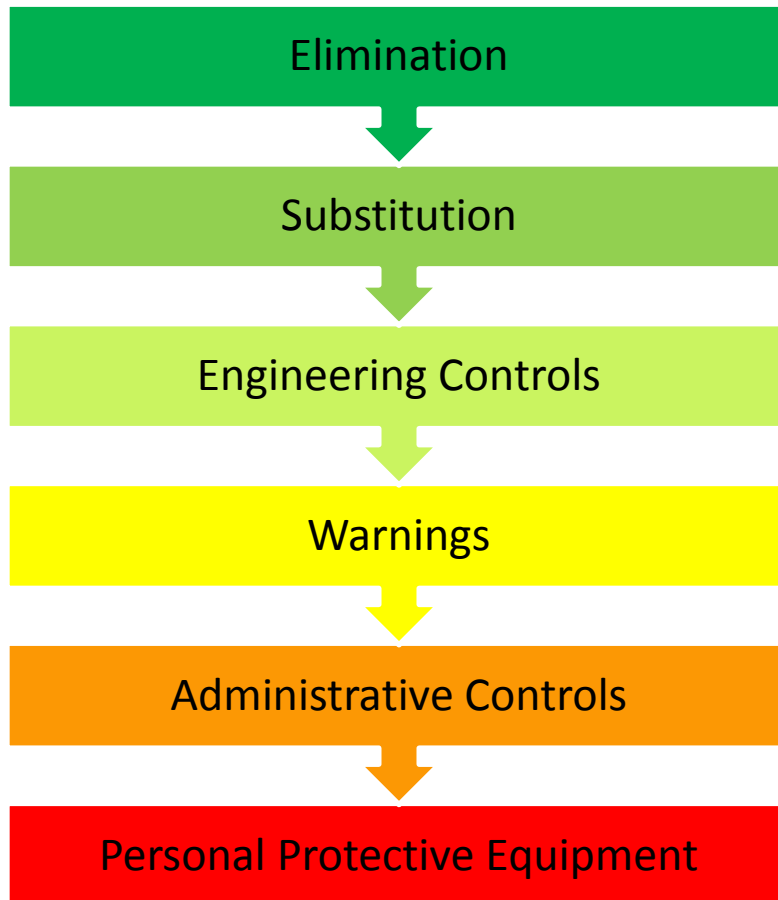
THE VOICE OF FOOD RETAIL 

March 11, 2015

Objectives

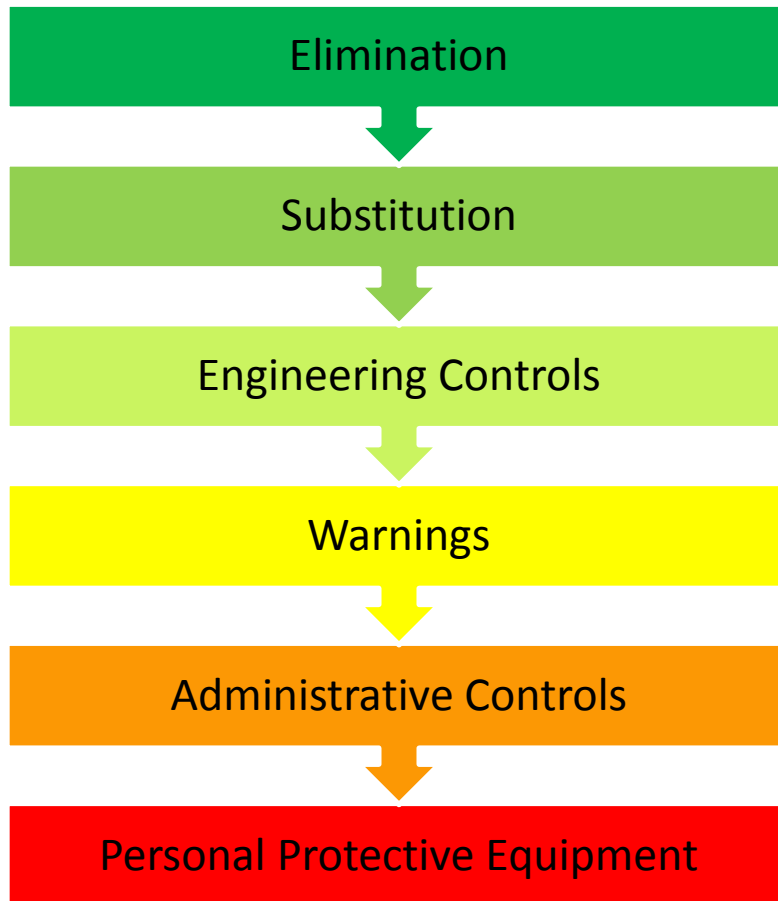
- Explain the Safety Hierarchy of Control and the various levels of effectiveness
- Share examples of success using **Prevention Through Design** to Think Differently and control retail hazards related to causes of
 - Immediate injury
 - Repetitive stress

Hierarchy of Control



- **Elimination:** Eliminate the hazard during design or redesign
- **Substitution:** Less hazardous materials, processes, or equipment
- **Engineering Controls:** Minimize risk through isolation and guarding
- **Warnings:** Use of signs, labels, strobes, buzzers
- **Administrative Controls:** Training, work methods, organization
- **PPE:** The “last line of defense”; a barrier to the hazard

Hierarchy of Control



- Higher levels mean
 - ✓ Greater effectiveness
 - ✓ Better business value



- Lower levels mean
 - ✓ Less effectiveness
 - ✓ Lower business value

Communication + Teamwork = Success



Pedestrian Safety



Before

Problem: Drivers did not know *where* to stop. Therefore, many of them *didn't*.

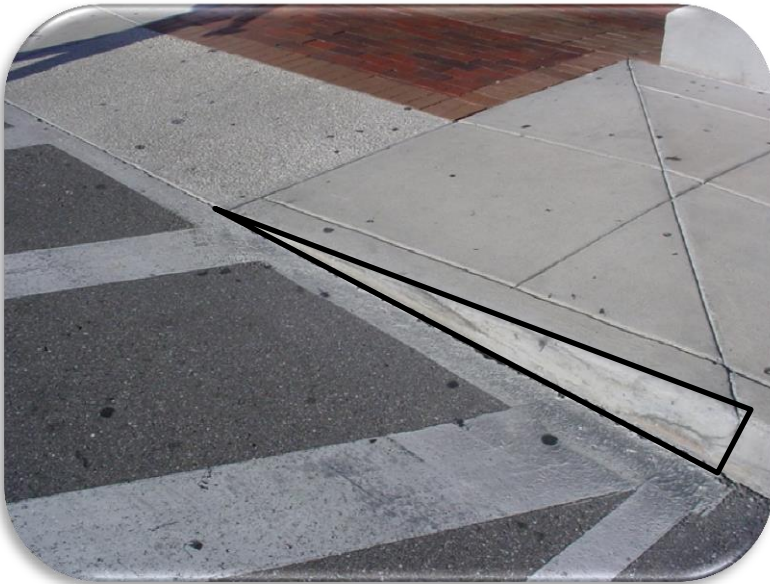
After



Added "STOP"
and line

Moved Sign Closer

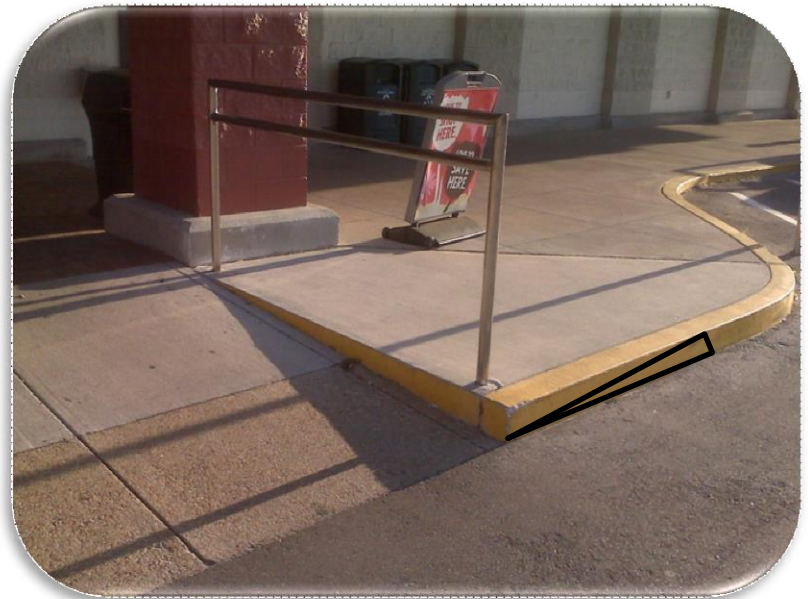
Flare Curb



Before

Problem: Customers taking a direct path from car to store entrance tripped over tapered (a.k.a., flared) curb.

After



Pavers



Before

Problem: Pavers shift and loosen after pressure washing.
Solution was to use stamped concrete.

After



Power for Lobby Displays



Before

Problem: Trip hazard was created when providing temporary power to lobby displays.

After



Seasonal Banners



Before

Problem: Associates had to climb 10' platform ladders to change the banners.

After



Cash Safes



Before

Problem: Associates' hands naturally wrap around this safe's thin door.

After



Deli Hot Case



Before

Problem: The base did not adequately protect customers from hot surfaces at the front of the case.

After



Soup Bar Trash Door



Before

Problem: Customers' hands got caught on the metal tab (spring-loaded door).

After



Combitherm Placement



Before

Problem: Potential for water nozzle to discharge into hot grease.

After



Patty Machine Guard



Before

Problem: Guard was inadequate to prevent finger amputations.

After



Sink Drain



Before

Problem: Straight-cut pipe doesn't direct water into the drain as well as angle-cut pipe.

After



Back Room Water Fountain



Before

Problem: Water fountain was an obstruction.

After



Industrial Truck Clearance



Before

Problem: Inadequate clearance promotes injuries and damaged product/equipment.

After



Industrial Truck Speed

Industrial trucks had to be placed into “creep mode” *manually*, leaving the potential for operator error.

Before

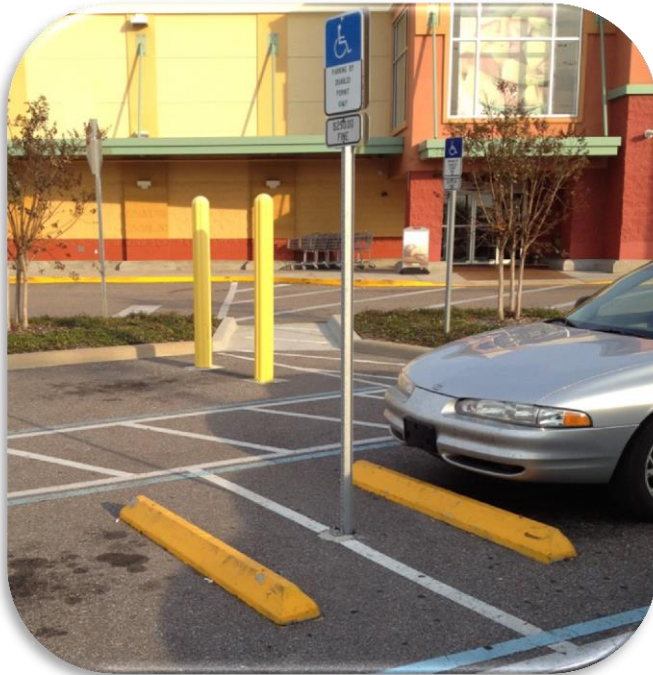
Problem: Raised loads in tight quarters could be damaged or lost with higher speeds.

After

[Click Here](#)



Parking Stops



Before

After



Problem: Customers were tripping over the parking stops.

Stepladders



Before

Problem: Ladders were not durable. Some associates stumbled off smaller top.

After



Cardboard Baler Clearing Rod



Problem: Associate was struck in the eye while helping to make a bale.

Before

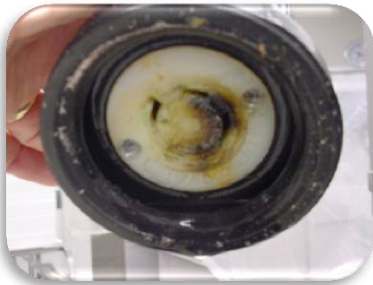
54"



After

31"

Electrical Drop Cords



Before

Problem: Electrical plugs were seldom unplugged during cleaning or make-shift solutions were employed.

After



Pallet Jack Foot Injuries



Before

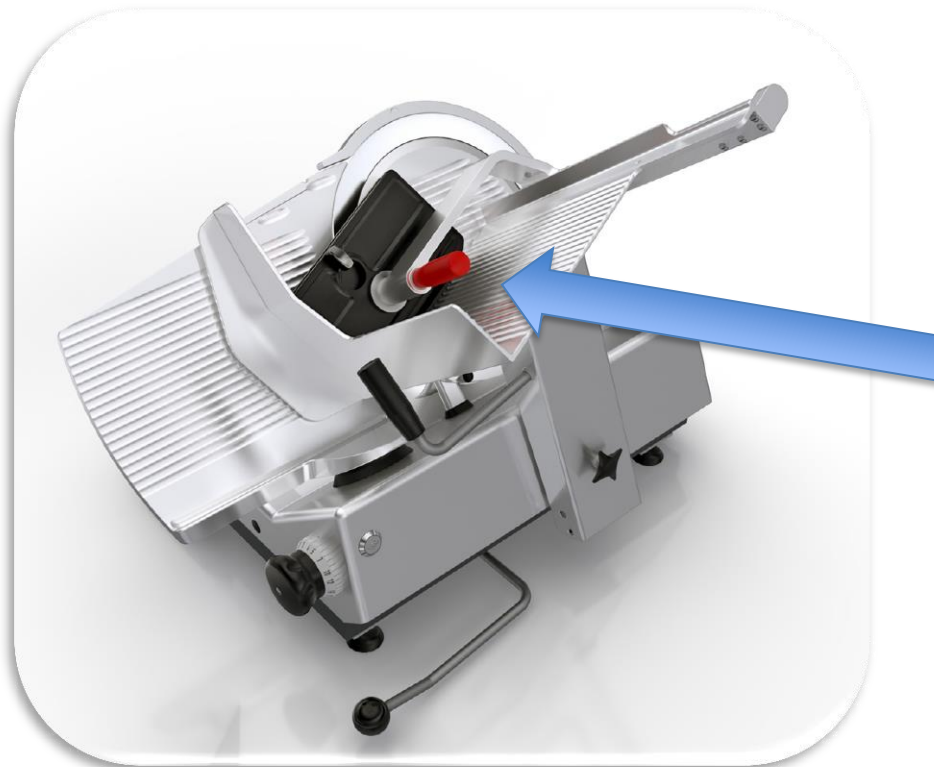
Problem: Associates are running over their feet with the front wheels of the jack.

After



Deli Slicer Cuts

Issue: Slicing with the wrong handle



Changing the color of the food pusher handle from black to **red**.

Deli Slicer Cuts

Issue: Leaving the blade open while placing or adjusting product

Unplugged



No Light

Gauge Plate Closed
and
Blade Off



Solid Green LED

Gauge Plate Open
or
Blade On



Flashing Red LED

Gauge Plate Open
and
Blade On



Solid Red LED

Ergonomically speaking...

- Thinking differently applies to solving repetitive stress injuries as well.
- Taking a fresh look at existing processes, and involving those that do the work each day, will help reveal innovative and effective solutions.
- Solutions may be “high tech” or “low tech”, but they can all have a tremendous impact.

Deli Slicers



Fixed Height

3-Second Adjust

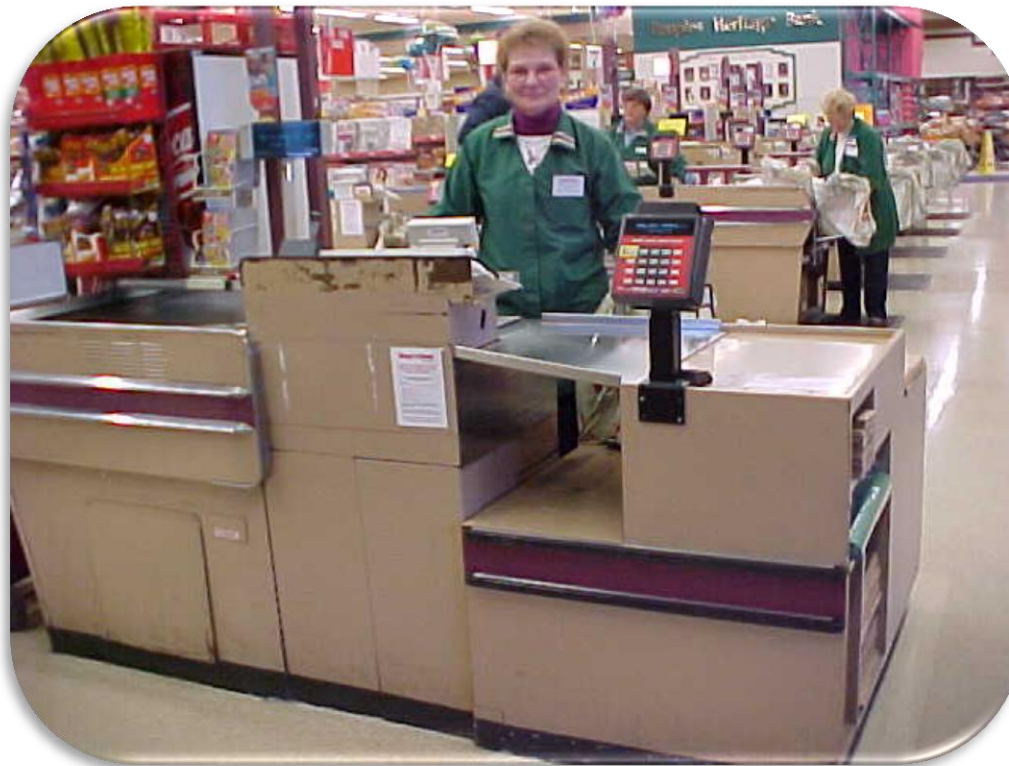


Deli Slicers, continued



Semi-Automatic Slicing Mode

Express Registers



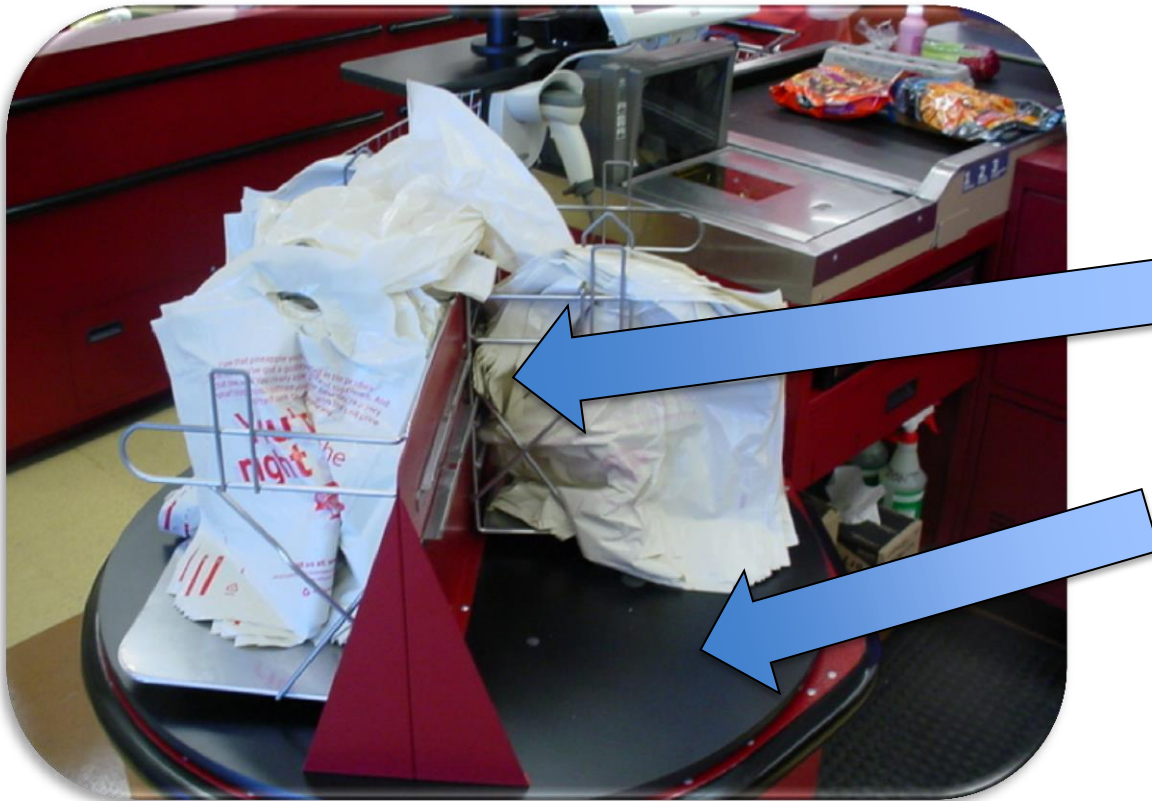
Lacks adjustability for bagging

Express Registers, continued



Better:
Top section can
be flipped,
providing two
height options.

Express Registers, continued



Best:

- Bag racks easily adjust.
- Rotary table provides space for 3 bags and an area for large items.

Offloading Pallets in Back Room



Use Ladder for Top-Third

Raise Pallet for Bottom-Third



Stocking Merchandise

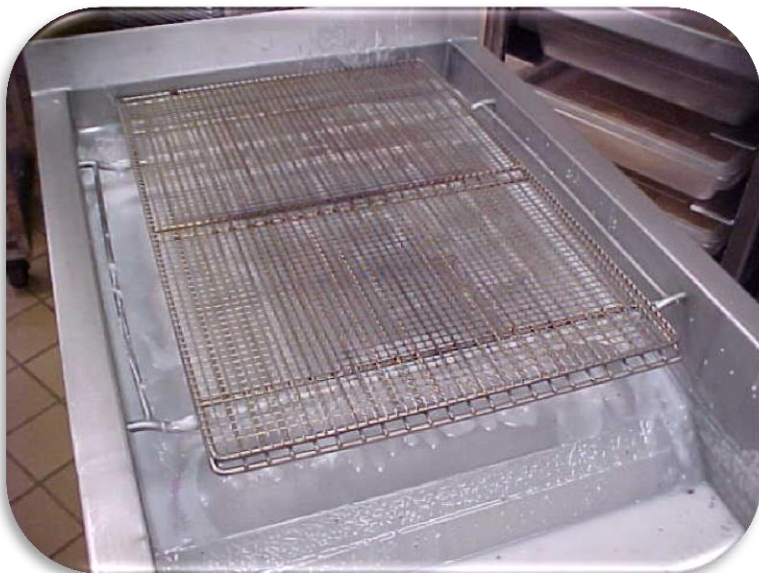


Box on Shelf Ledge

Dolly and Milk Crates



Donut Glazing Table



Glazing tray was lifted manually above and across the product.

Retrofit eliminates manual lifting away from the body.



Icing Buckets



Dolly allows easy access and storage beneath a table.

Icing Buckets, continued



Frosting bucket stands:

- Keep buckets off tables, making it easier to scoop out icing.
- Provide height adjustability to accommodate the decorator height.

Rotisserie Chicken



Receiver installed in corner of sink keeps the rotisserie spit in place.

Less Fatigue and Injuries



Bird Cart



Holds over 40 birds

Reduced stooping



Testing, Piloting and Rollout

Recommended steps/phases for success:

1. Identify issues based on data.
2. Include the manufacturer whenever possible.
3. Test idea for “proof of concept”.
4. Pilot in select number of locations.
5. Determine implementation (retrofit existing equipment, purchase of new equipment, etc.).
6. Execute rollout plan.

Benefit Recap

Successful **Prevention Through Design** results in:

1. Fewer and/or less severe injuries
2. Elimination/Reduction of PPE and/or training
3. Increased productivity and morale
4. Better equipment/facility design
5. Lower overall cost

And *this will add to your company's bottom line!*

Questions?

