

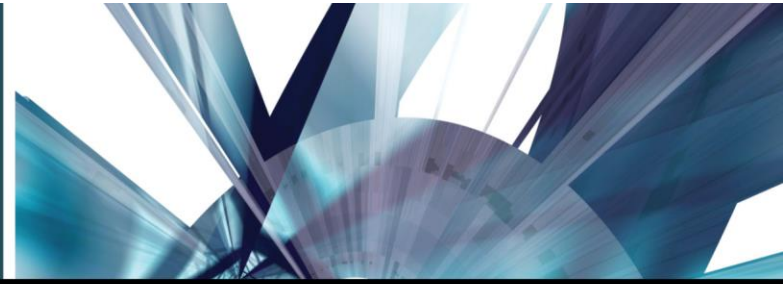
PEOPLE | PROPERTY | REPUTATION

# ASSET PROTECTION



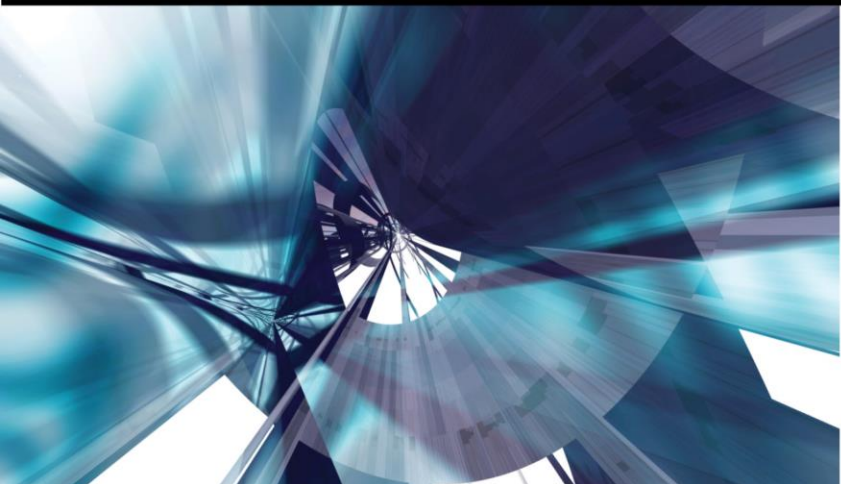
THE VOICE OF FOOD RETAIL 

PEOPLE | PROPERTY | REPUTATION



# Critical Infrastructure Protection

**Mike Boyle, CPP, Union County Prosecutor's Office**  
**Nick Kormash, CPP, Hudson County Prosecutor's Office**



## **Urban Areas Security Initiative (UASI)**

**Total Funding Available in FY 2013: \$558,745,566**

**Purpose:** UASI program funds address the unique planning, organization, equipment, training, and exercise needs of high-threat, high-density urban areas, and assists them in building an enhanced and sustainable capacity to prevent, protect against, mitigate, respond to, and recover from acts of terrorism.

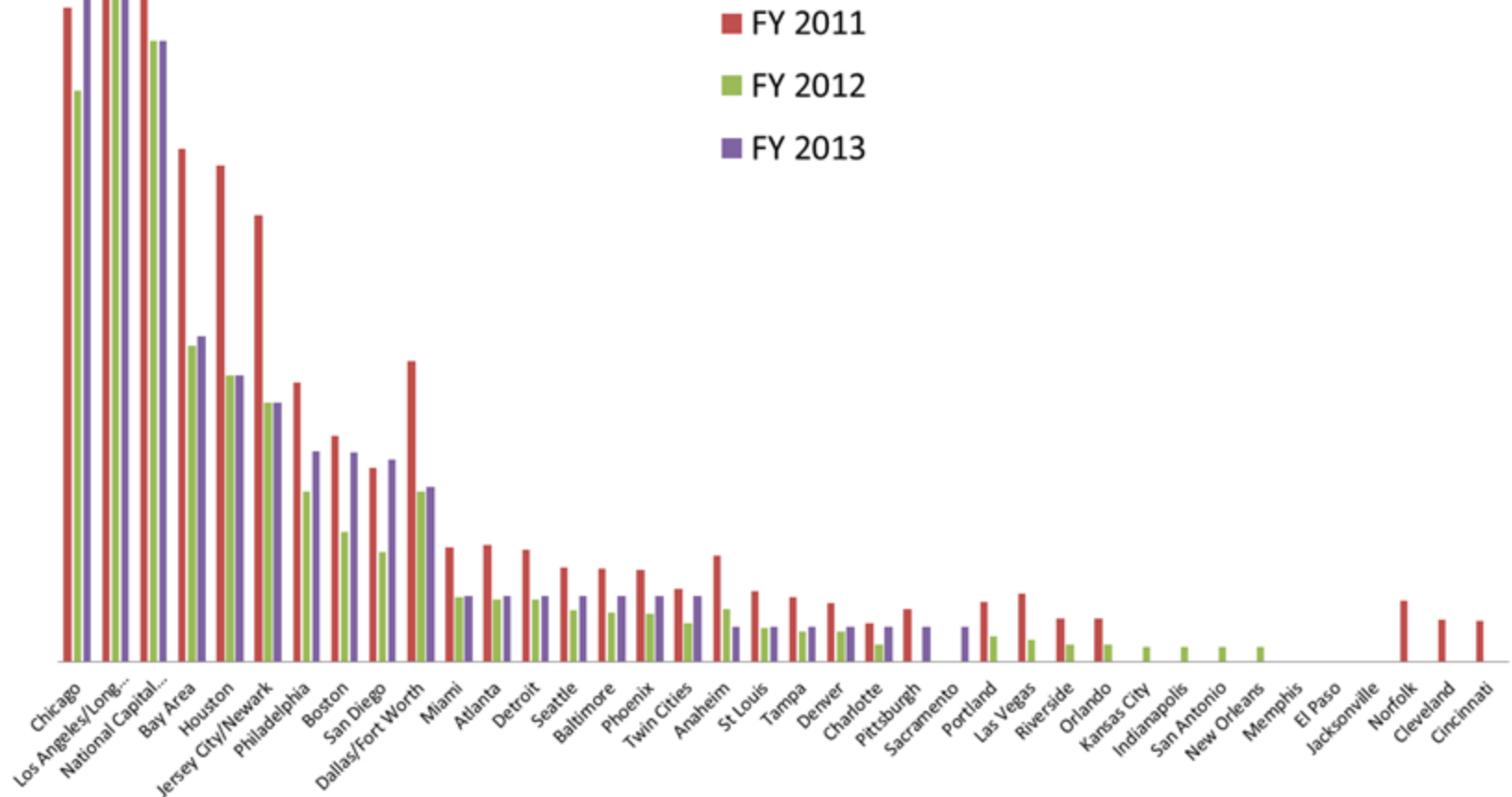
**Eligible Applicants:** A total of 25 high-threat, high-density urban areas were eligible for funding under the FY 2013 UASI program. Eligible candidates for the FY 2013 UASI program were determined through an analysis of relative risk of terrorism faced by the 100 most populous metropolitan statistical areas in the United States, in accordance with the 9/11 Act.



# UASI Funding: FY2013 FEMA Allocations

Compared to FY 2011 and 2012

(New York Hidden for Display)



## JERSEY CITY-NEWARK UASI REGION

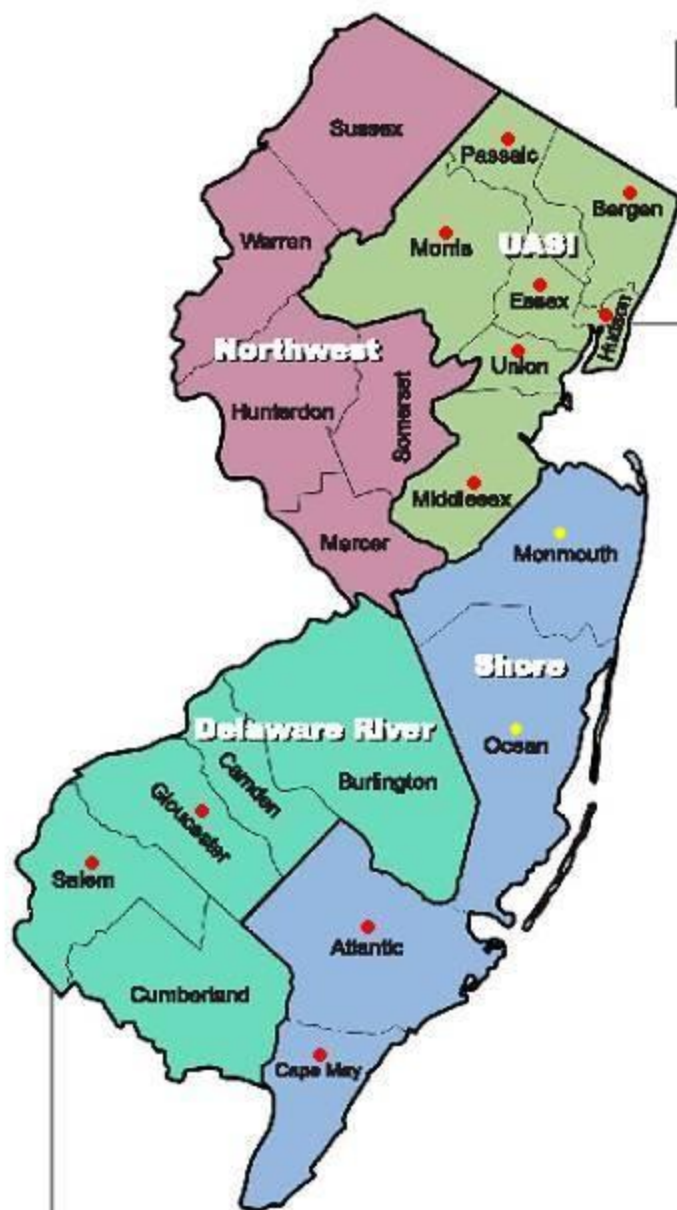
Approximately 60% of the critical infrastructure and approximately 72% of the State's population is located within the UASI region.

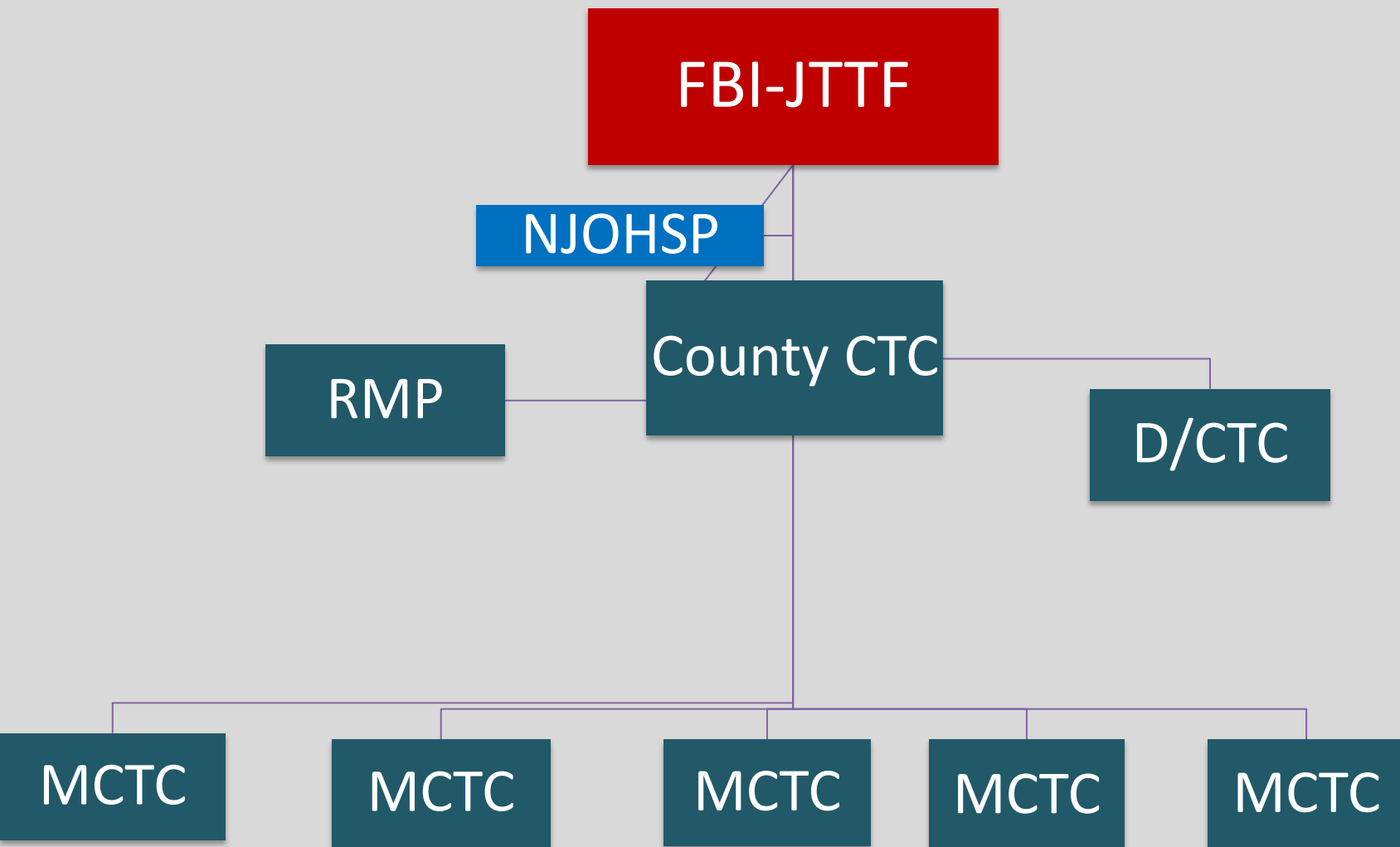
## RISK MITIGATION PLANNER & CIC PROGRAMS

- Originally all 21-counties in New Jersey
- Assigned to county prosecutor's offices
- Collection/analysis of CI-KR information
- Represents CI-KR in counter-terrorism Intel
- Liaison between State & local LE
- Provide business outreach
- Advise on protection policy, plans, procedures
- Conduct comprehensive security assessments
- Provide local knowledge
- No regulatory or code enforcement authority

- 13-counties (7-UASI & 4-other counties FT)
- Interchangeable/assist
- Same training & equipment (ASIS-CPP)
- Free resource - advisors/security assessments (confidential & protected)
- **Security Assessments**
- **Project development/funding**
- National-State-County-Local (coordination)
- Enhanced information flow (1-call)
- Improved relationship

# Homeland Security Regions







## DHS CRITICAL INFRASTRUCTURE SECTORS

**Chemical**

**Commercial Facilities**

**Communications**

**Critical Manufacturing**

**Dams**

**Defense Industrial Base**

**Emergency Services**

**Transportation Systems**

**Financial Services**

**Food and Agriculture**

**Government Facilities**

**Healthcare and Public Health**

**Information Technology**

**Nuclear**

**Energy**

**Water & Wastewater Systems**

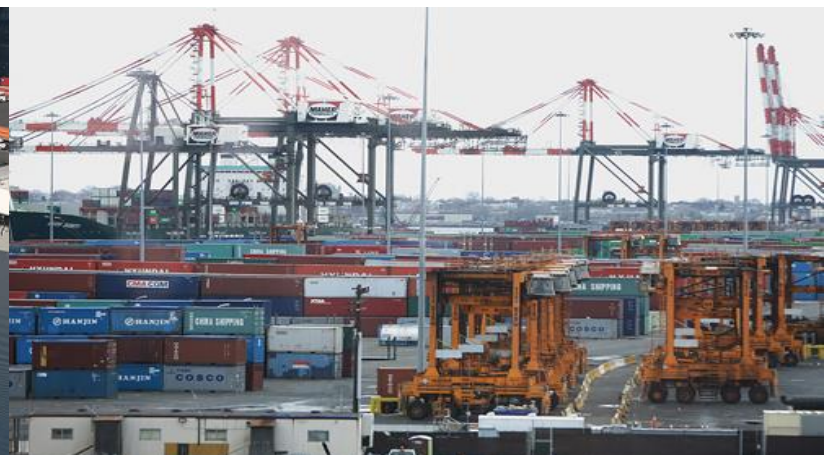
# ASSET

PEOPLE | PROPERTY | REPUTATION

# PROTECTION

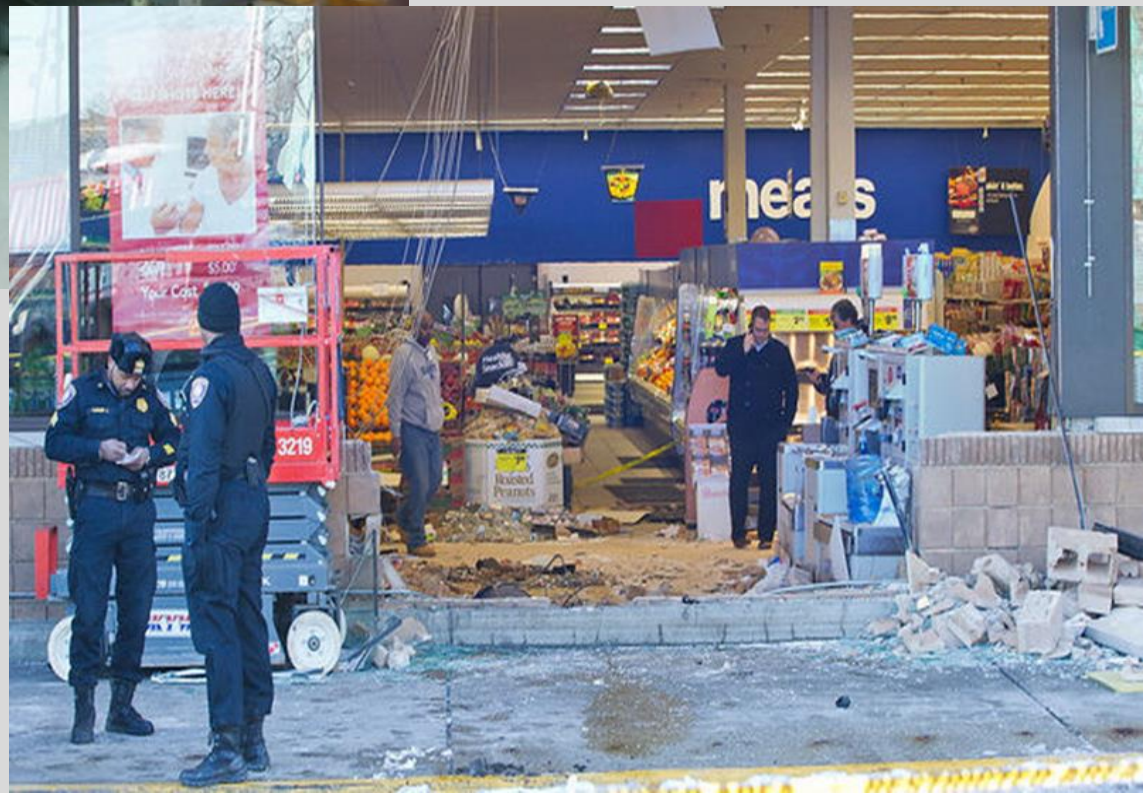


## SECURITY ASSESSMENTS





















**Bollard spacing**













SERVICE  
5  
COURT

















FIRE  
DEPARTMENT  
CONNECTION



CENTRAL AVENUE  
PARKING  
732-576-1951









*Unmaintained foliage provides easy roof access*



*Vending machines providing roof accessibility*











DONT  
WALK

525

DO NOT  
STOP ON  
TRACKS















**Lighting blocked by vegetation**





overgrown foliage near entrance door







**emergency exit door used for general ingress and egress**

**door chock**





Fire stand-pipe

























**Standard Light Switch**

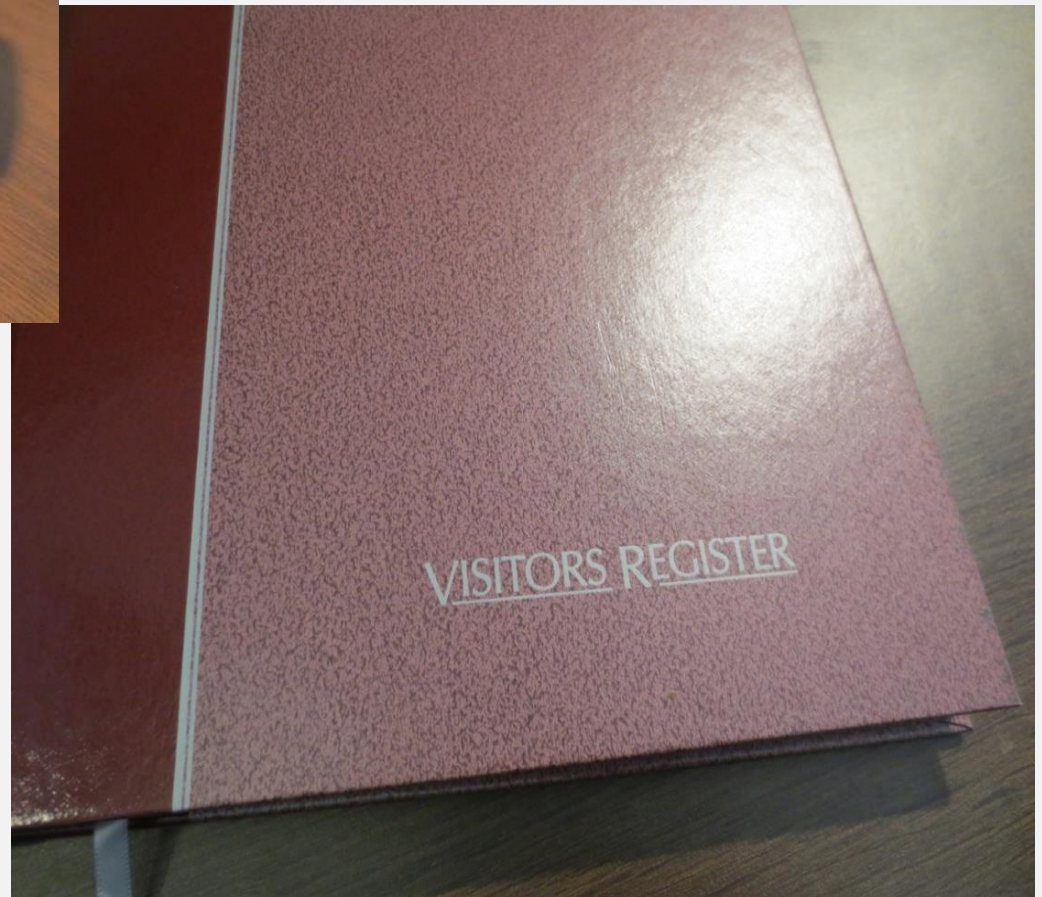


**Keyed Light Switch**





# Visitor Management





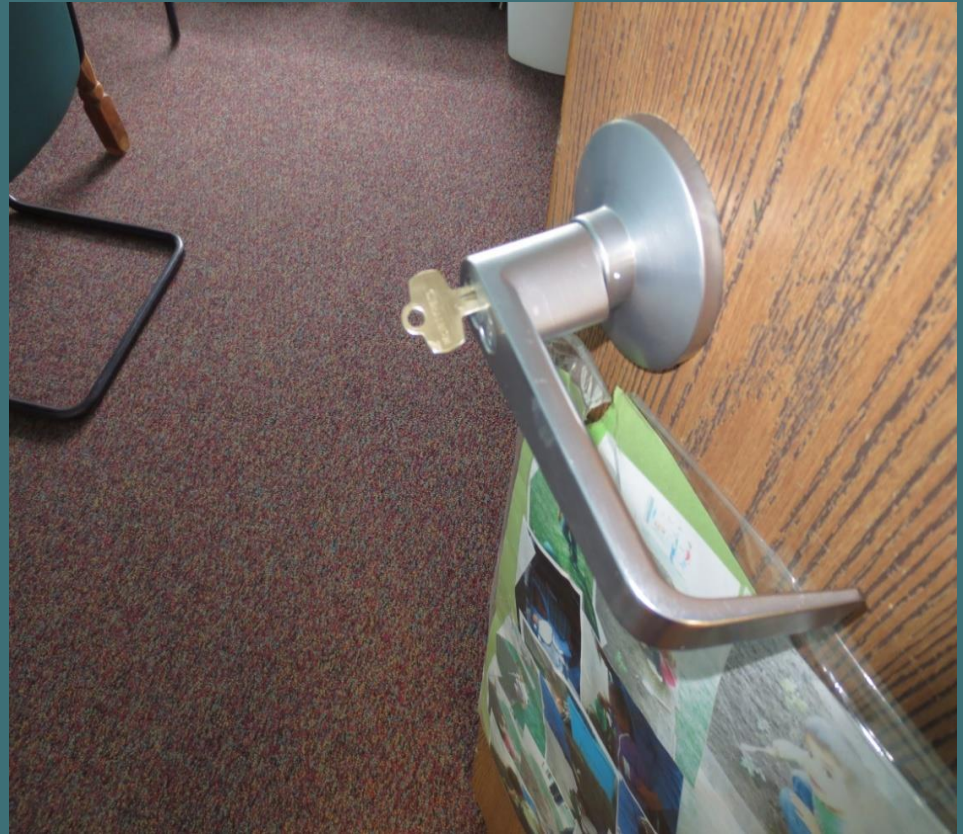
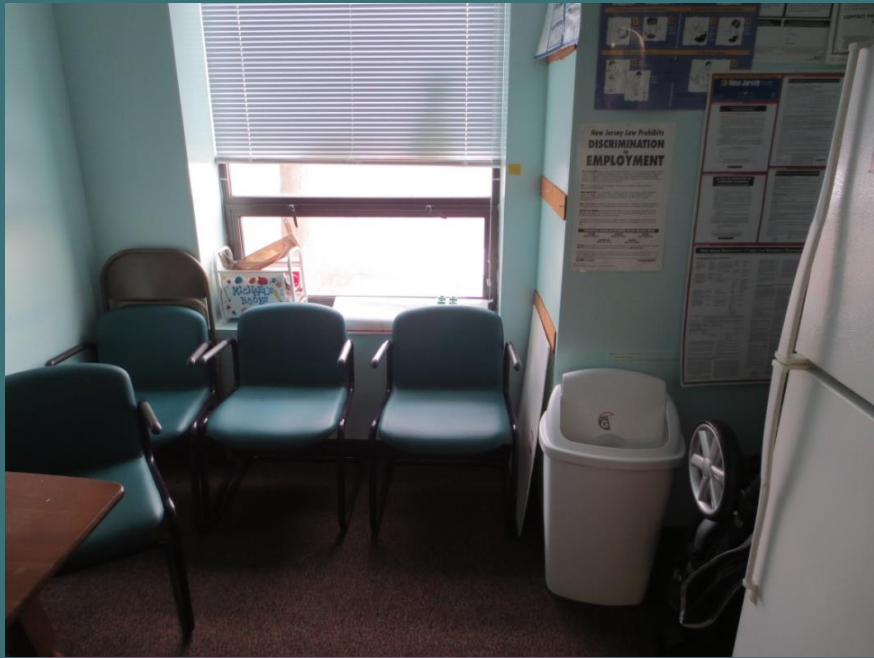
Please Check @ home or  
in your car to see if  
you may have forgotten  
to return your Visitor  
Pass. Thank you!  
Katie













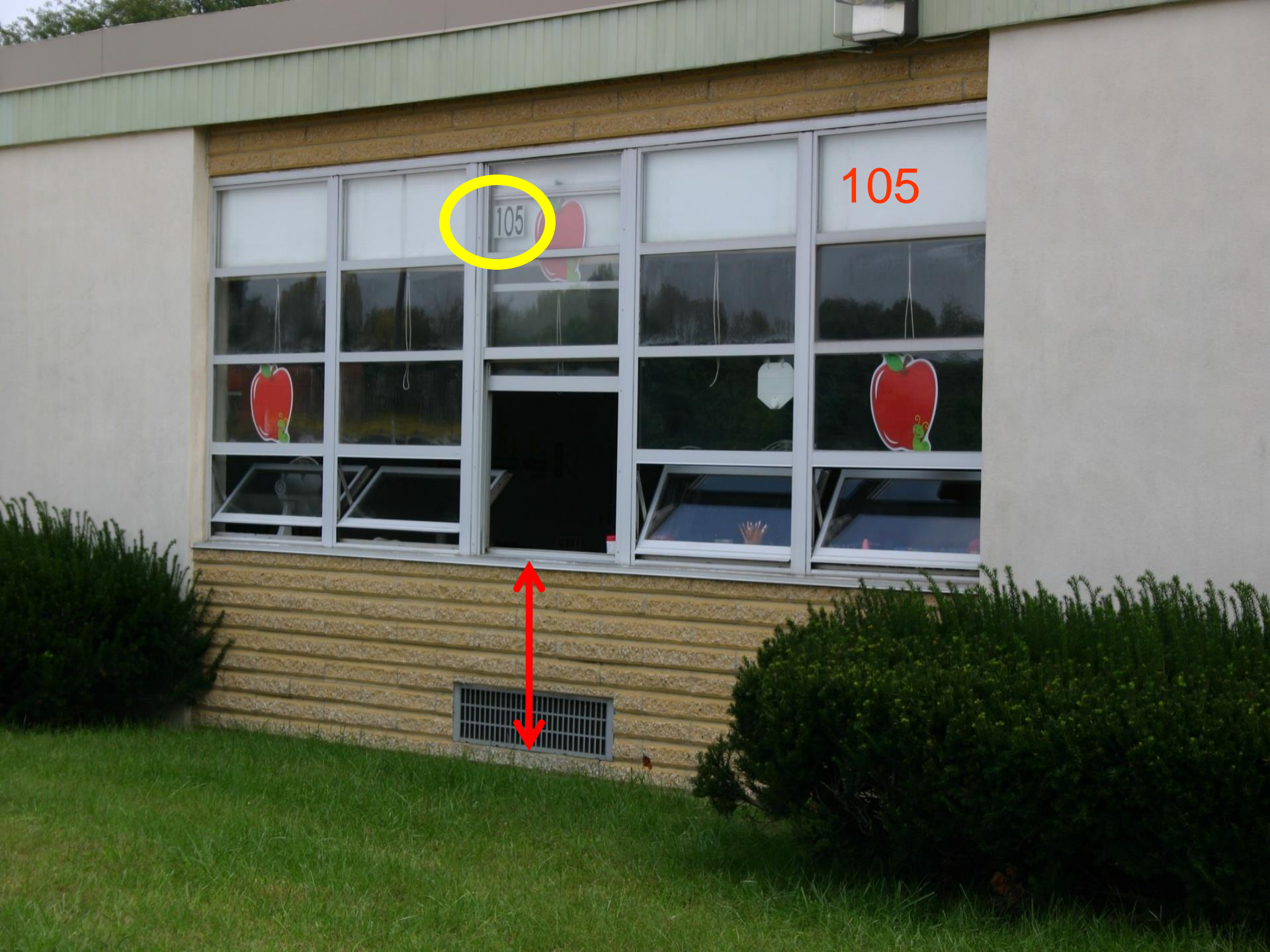






Room  
105





105

105









**missing ceiling panel**



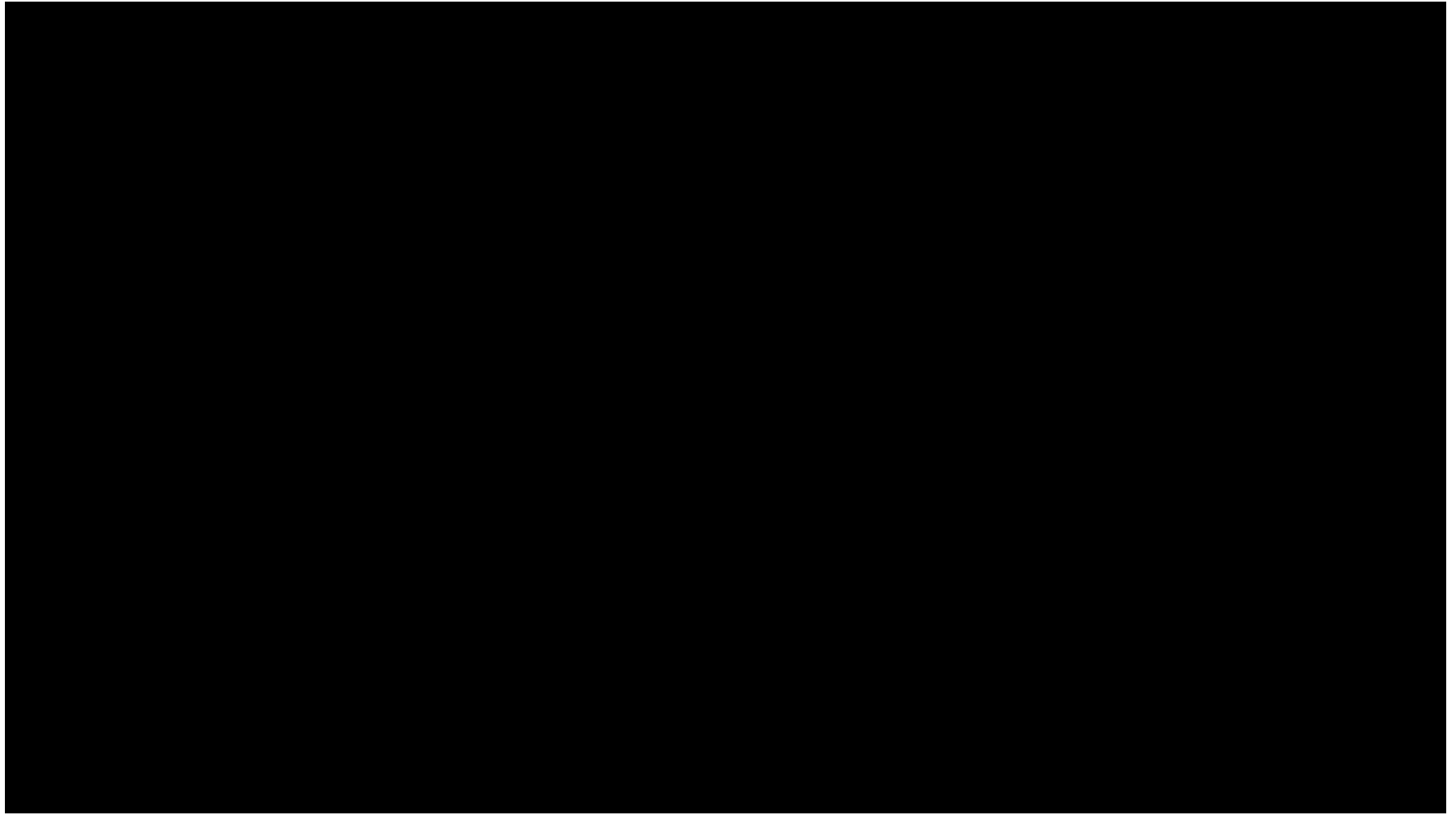
- Evacuation Notification – no PA system, FD alarm
- Number of entrances – monitoring
- Display of I.D. cards

# Annual Number of Incidents by Location

*Source:* NYPD Active Shooter Recommendations and  
Analysis for Risk Mitigation 2012 Edition

Location Type	Number of Incidents	Percentage
Schools	68	24%
Office Building	31	11%
Open Commercial	67	24%
Factory/Warehouse	33	12%
Other	80	29%
Total*	279	100%





# Questions?

Mike Boyle  
[mboyle@ucnj.org](mailto:mboyle@ucnj.org)

Nick Kormash  
[nkormash@hcpo.org](mailto:nkormash@hcpo.org)



PEOPLE | PROPERTY | REPUTATION

# ASSET PROTECTION



THE VOICE OF FOOD RETAIL 